

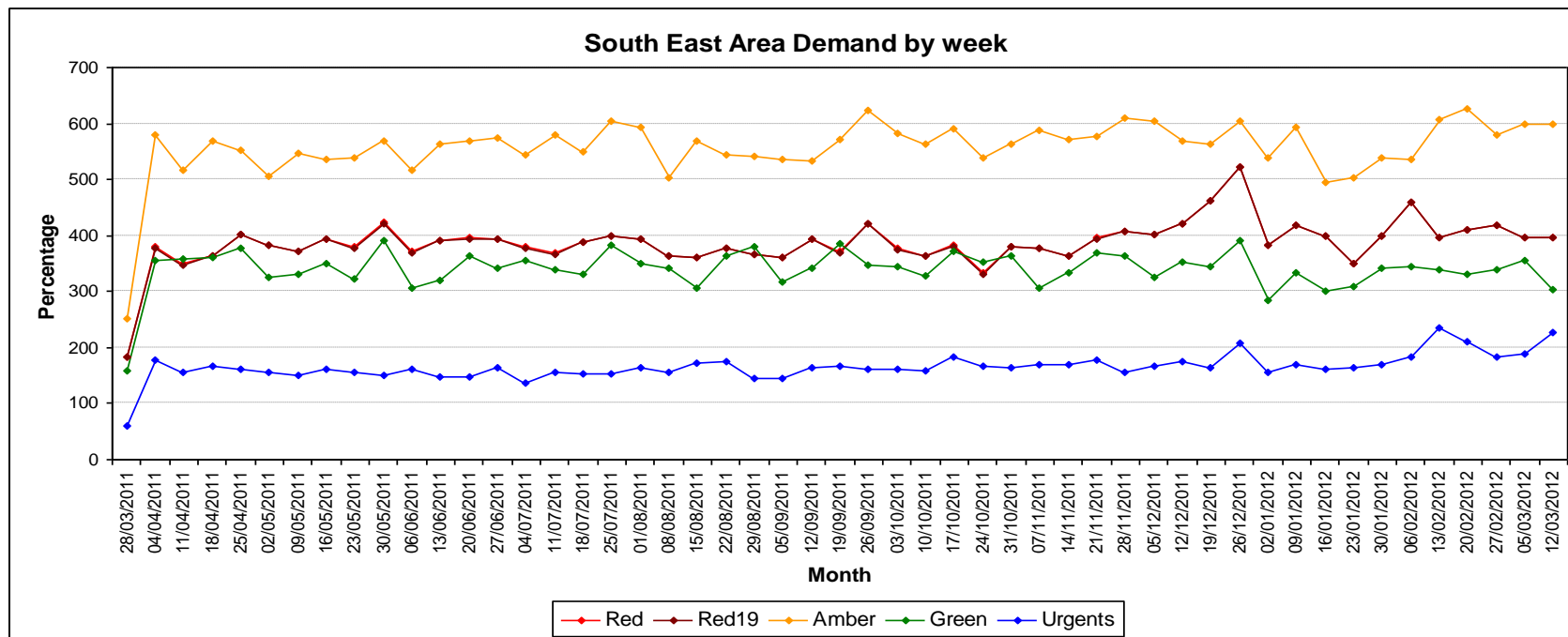


Portsmouth HOSC

Thursday 22nd March 2012



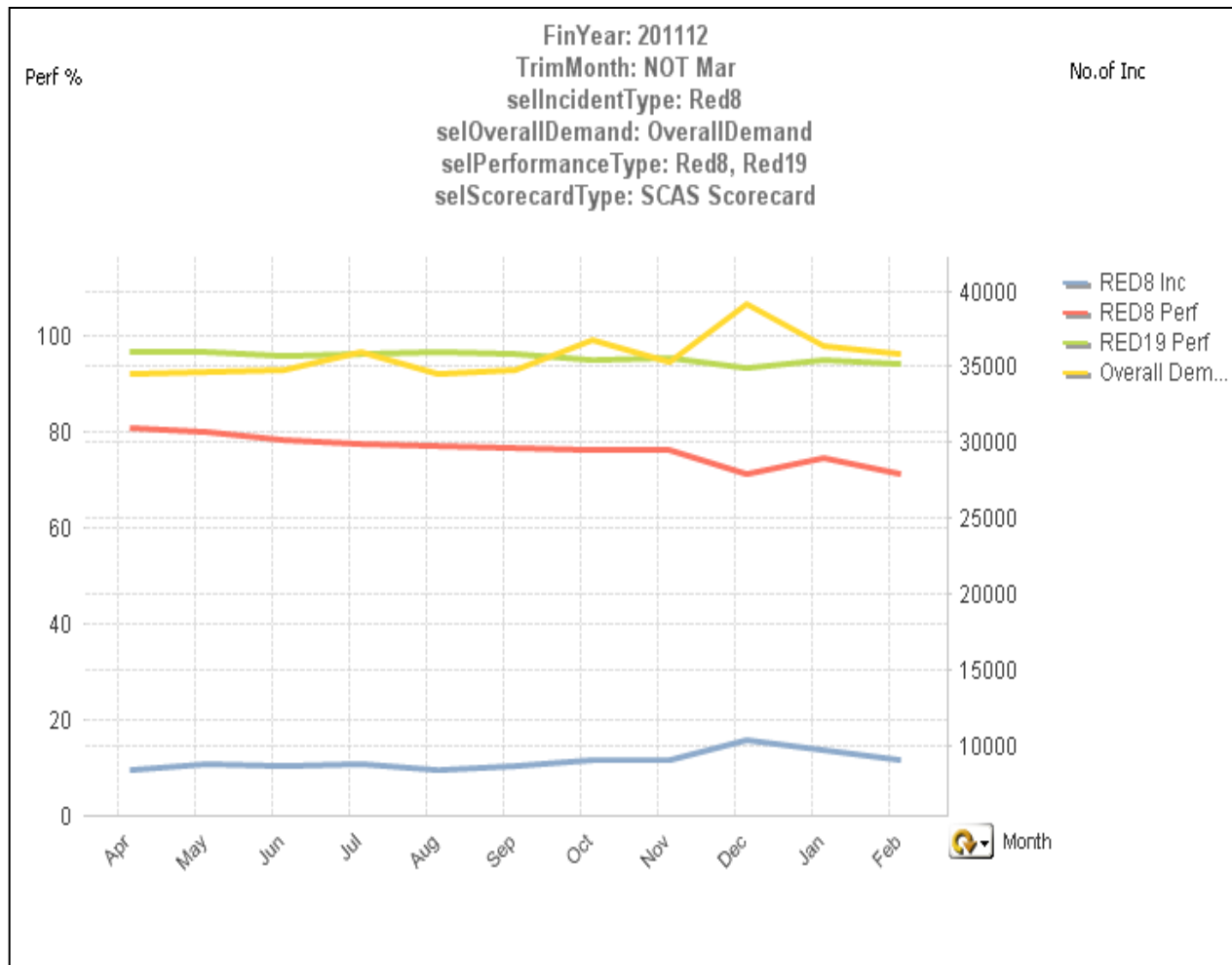
Demand for SE by category by week



	Red	Red19	Amber	Green	Urgents	RAGU	Reds % Overall
23/01/2012	350	350	504	308	163	1325	26.42%
30/01/2012	399	398	538	341	169	1446	27.52%
06/02/2012	460	460	537	344	184	1525	30.16%
13/02/2012	397	397	606	338	234	1575	25.21%
20/02/2012	409	409	627	332	211	1579	25.90%
27/02/2012	419	419	579	339	182	1519	27.58%
05/03/2012	397	397	598	356	188	1539	25.80%
12/03/2012	396	396	598	303	228	1525	25.97%



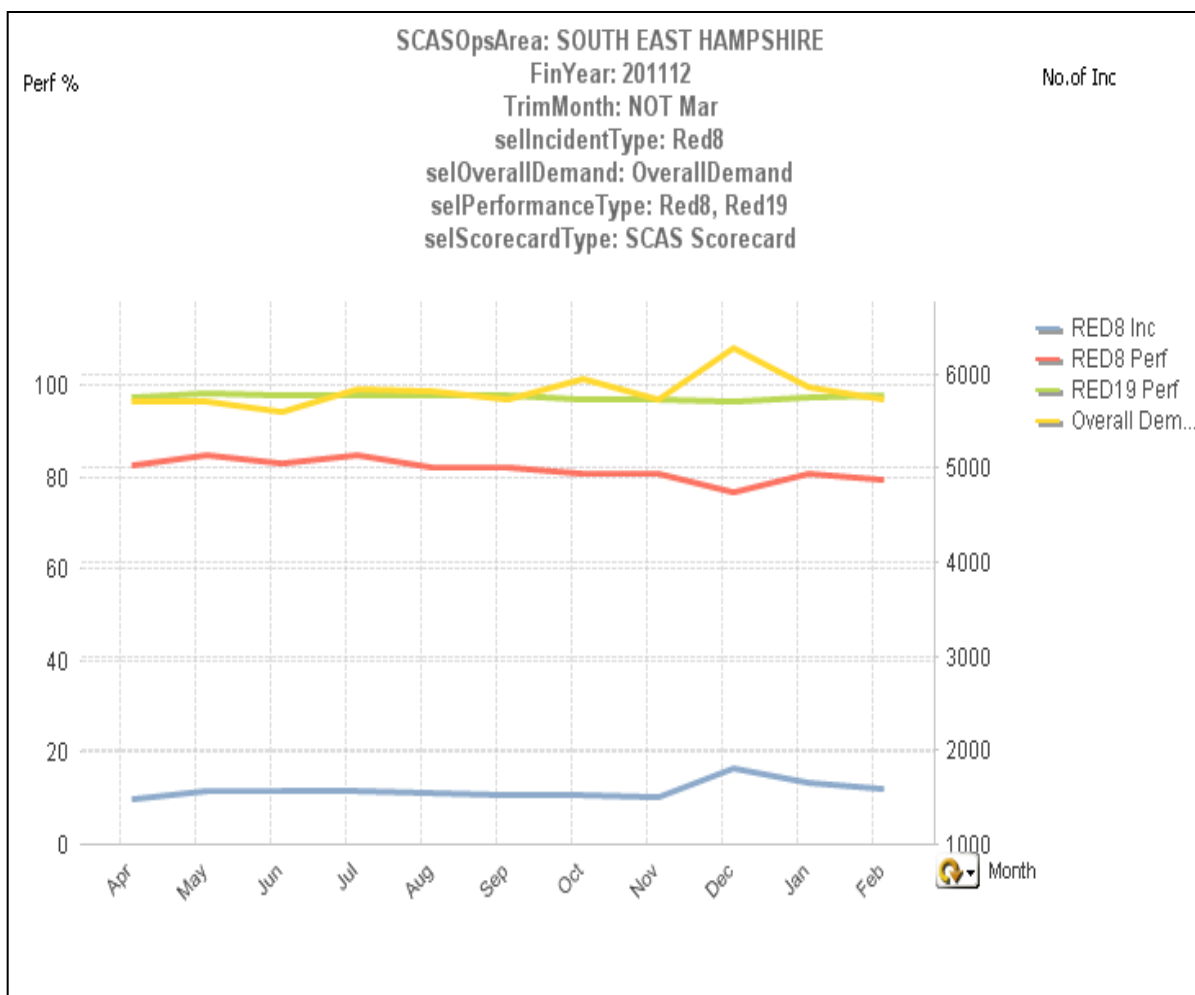
Performance - SCAS YTD – Red 8 and Red 19



SCAS YTD		
	Red 8 Performance %	Red 19 Performance %
Apr	80.82	96.69
May	79.83	96.59
Jun	78.21	95.75
Jul	77.29	96.01
Aug	77.06	96.3
Sep	76.65	95.94
Oct	76.11	95.02
Nov	75.98	95.41
Dec	71.28	93.02
Jan	75.71	95.38
Feb	71.12	94.05
March	72.88	94.82
YTD(19/03)	75.95	95.33



Performance – South East Ops Area YTD – Red 8 and Red 19



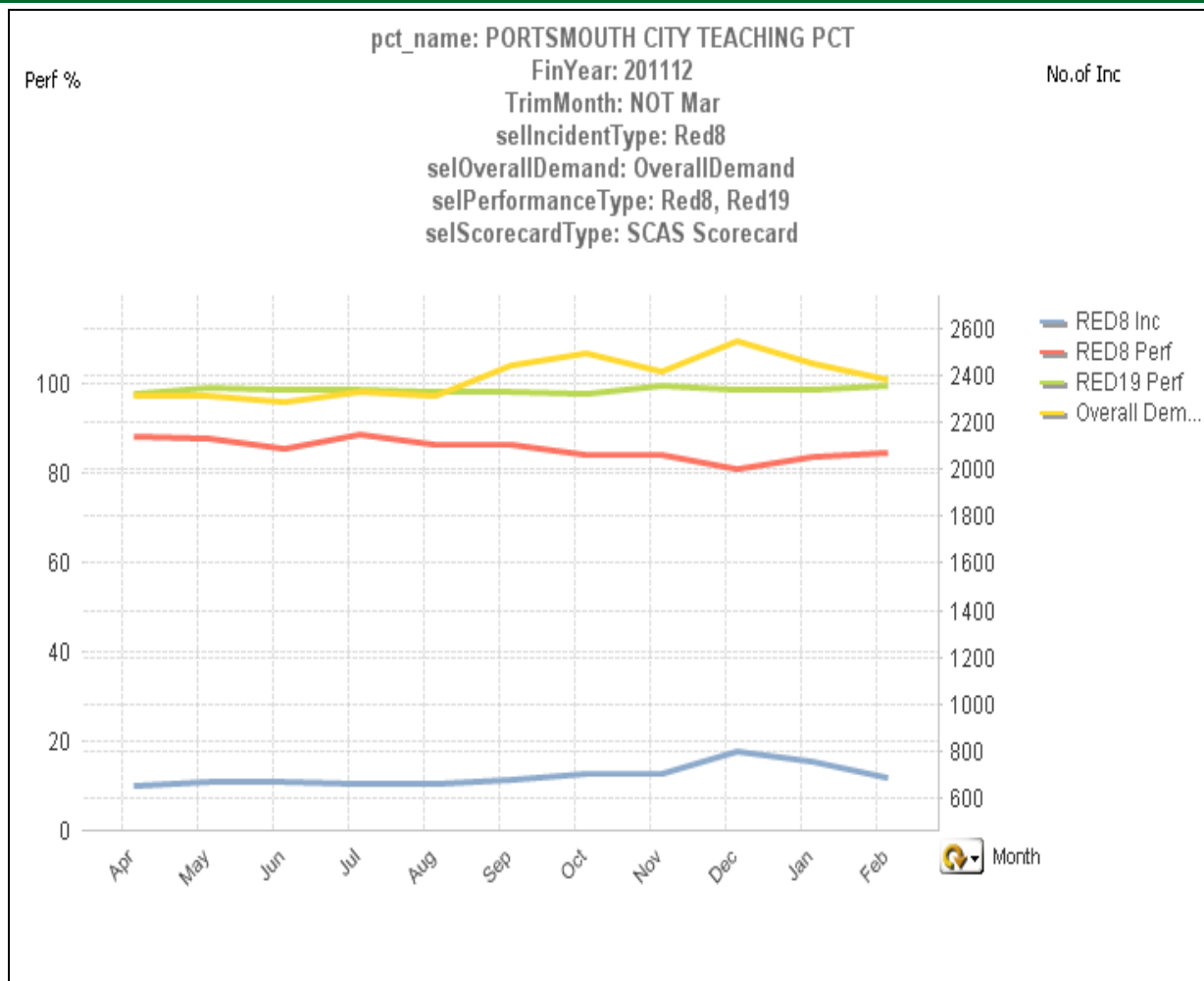
SE Ops Area YTD		
	Red 8 Performance %	Red 19 Performance %
Apr	82.60	97.42
May	84.68	98.27
Jun	82.94	97.68
Jul	84.75	97.71
Aug	81.86	97.81
Sep	81.91	97.84
Oct	80.66	96.70
Nov	80.54	97.07
Dec	76.74	96.22
Jan	80.49	97.23
Feb	79.24	97.60

March	79.36	97.58
--------------	--------------	--------------

YTD(19/03)	81.31	97.41
-------------------	--------------	--------------



Performance – Portsmouth PCT YTD – Red 8 and Red 19



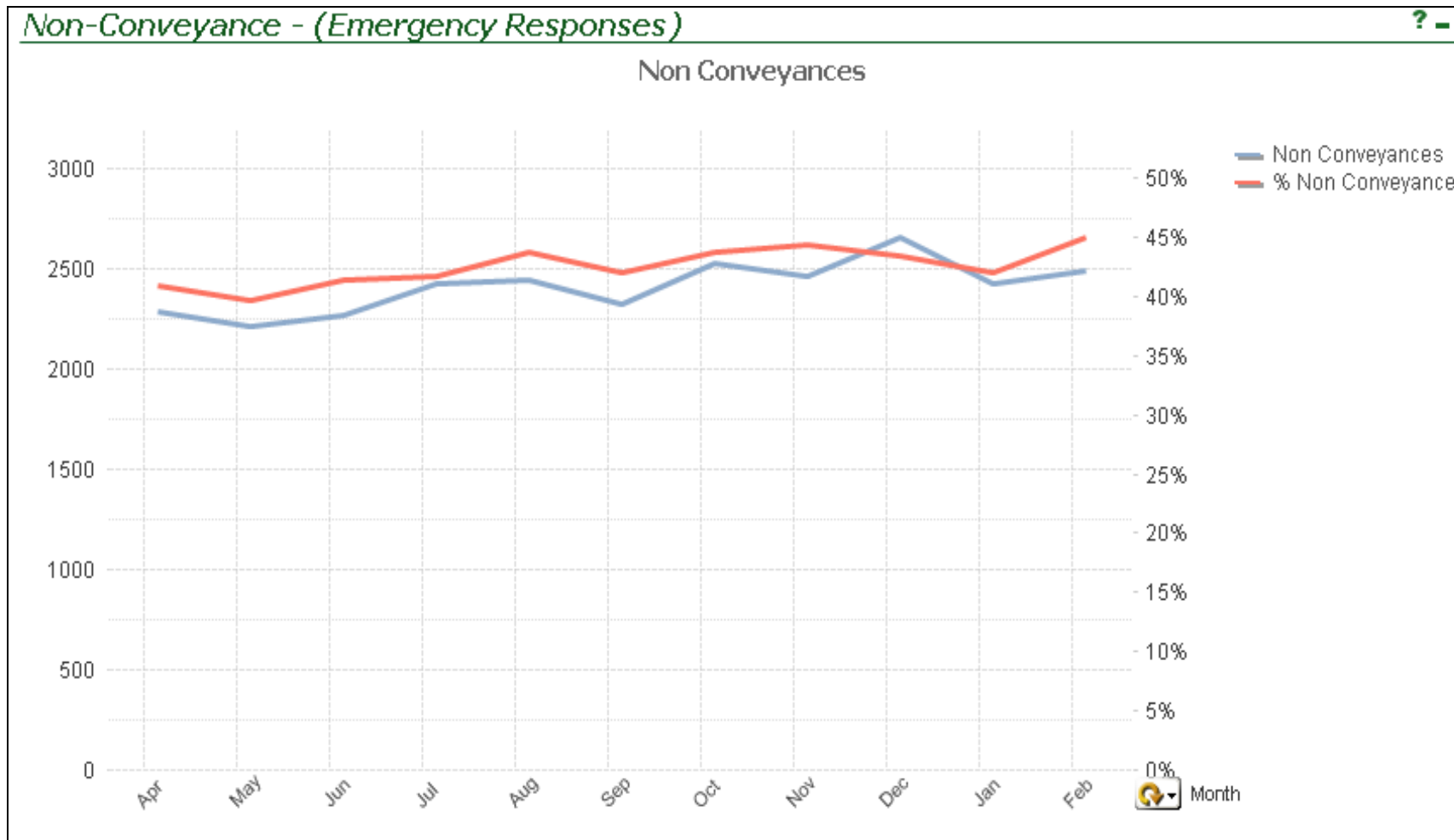
PORTSMOUTH PCT YTD		
	Red 8 Performance %	Red 19 Performance %
Apr	87.96	97.52
May	87.76	99.09
Jun	85.52	98.49
Jul	88.58	98.78
Aug	86.54	98.03
Sep	86.37	98.22
Oct	83.93	97.86
Nov	84.10	99.57
Dec	81.08	98.62
Jan	83.55	98.81
Feb	84.65	99.56

March	81.47	99.33
--------------	--------------	--------------

YTD(19/03)	85.11	98.63
-------------------	--------------	--------------



Non-Conveyance South East Area by month





Handover Delays

Queen Alexandra Hospital						
	Excess Handover Time	Number of Arrivals	Number of Handovers	Handover Compliance	Number over 15 mins to Handover	% Handover delay
Dec	282:54:24	3734	2560	68.56%	1152	45.00%
Jan	185:07:53	3455	2421	70.07%	1165	48.12%
Feb	190:13:17	3336	2207	66.16%	984	44.59%

University Hospital Southampton						
	Excess Handover Time	Number of Arrivals	Number of Handovers	Handover Compliance	Number over 15 mins to Handover	% Handover delay
Dec	100:47:00	3278	2606	79.50%	1866	71.60%
Jan	118:02:25	2982	2295	76.96%	1656	72.16%
Feb	281:07:54	3029	2261	74.65%	1813	80.19%

Royal Hampshire County Hospital						
	Excess Handover Time	Number of Arrivals	Number of Handovers	Handover Compliance	Number over 15 mins to Handover	% Handover delay
Dec	1:12:05	1020	709	69.51%	322	45.42%
Jan	29:09:35	1037	726	70.01%	342	47.11%
Feb	14:20:39	1054	710	67.36%	331	46.62%

	Data to 19/03/2012	Excess Handover Time	Number of Arrivals	Number of Handovers	Handover Compliance	Number over 15 mins to Handover	% Handover delay
March	Queen Alexandra Hospital	179:16:20	2181	1582	72.50%	801	50.63%
	University Hospital Southampton	280:58:03	2000	1551	77.50%	1127	72.66%
	Royal Hampshire County Hospital	64:18:58	694	471	67.70%	237	50.32%